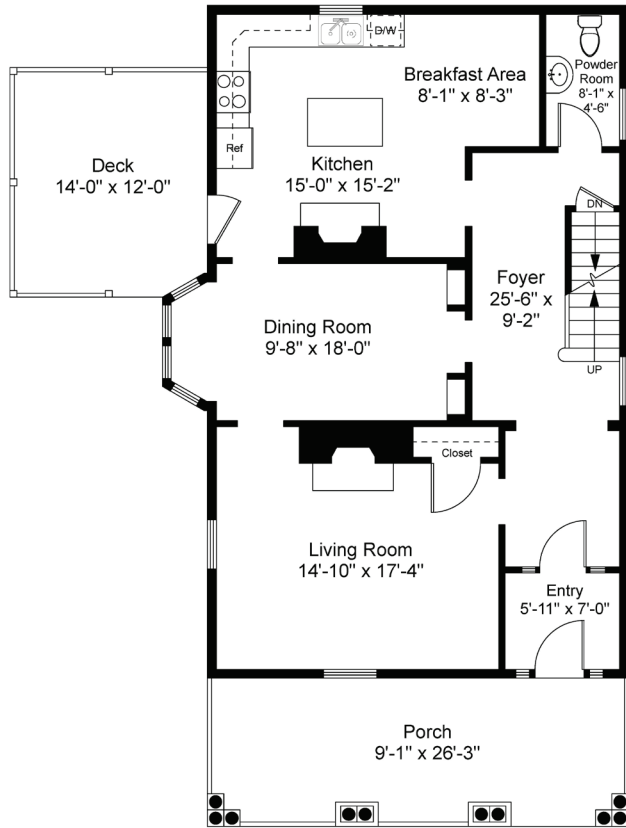
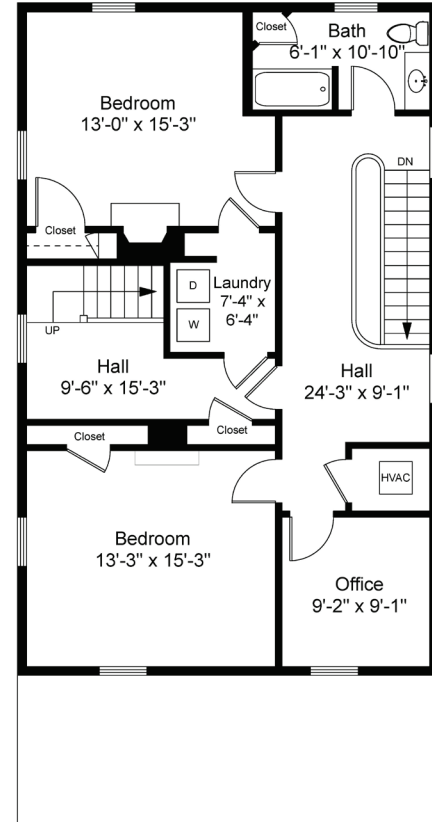
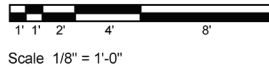


68 LYMAN STREET, WALTHAM



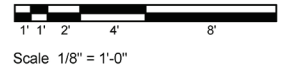
First Floor Plan
Ceiling Height = 9'-5"

68 Lyman Street
Waltham, MA 02452

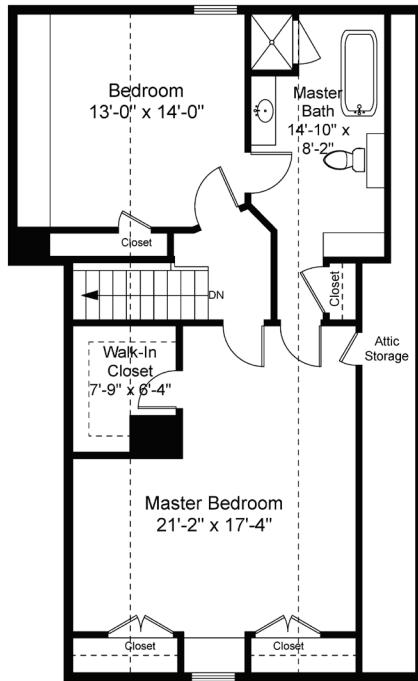


Second Floor Plan
Ceiling Height = 8'-7"

68 Lyman Street
Waltham, MA 02452



68 LYMAN STREET, WALTHAM

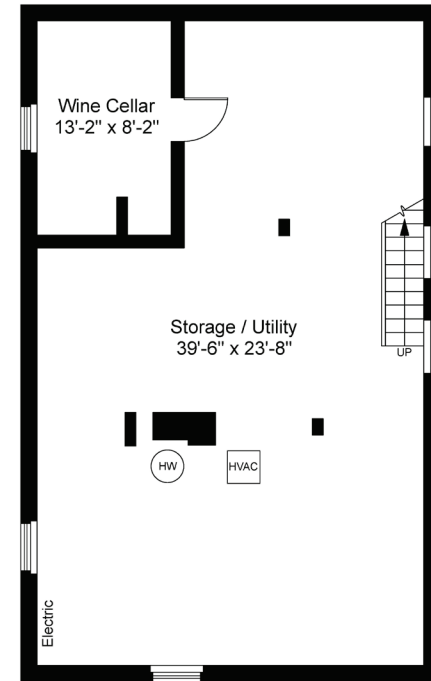


Third Floor Plan
Ceiling Height = 8'-10"

68 Lyman Street
Waltham, MA 02452



Scale 1/8" = 1'-0"



Basement Plan
Ceiling Height = 7'-5"

68 Lyman Street
Waltham, MA 02452



Scale 1/8" = 1'-0"